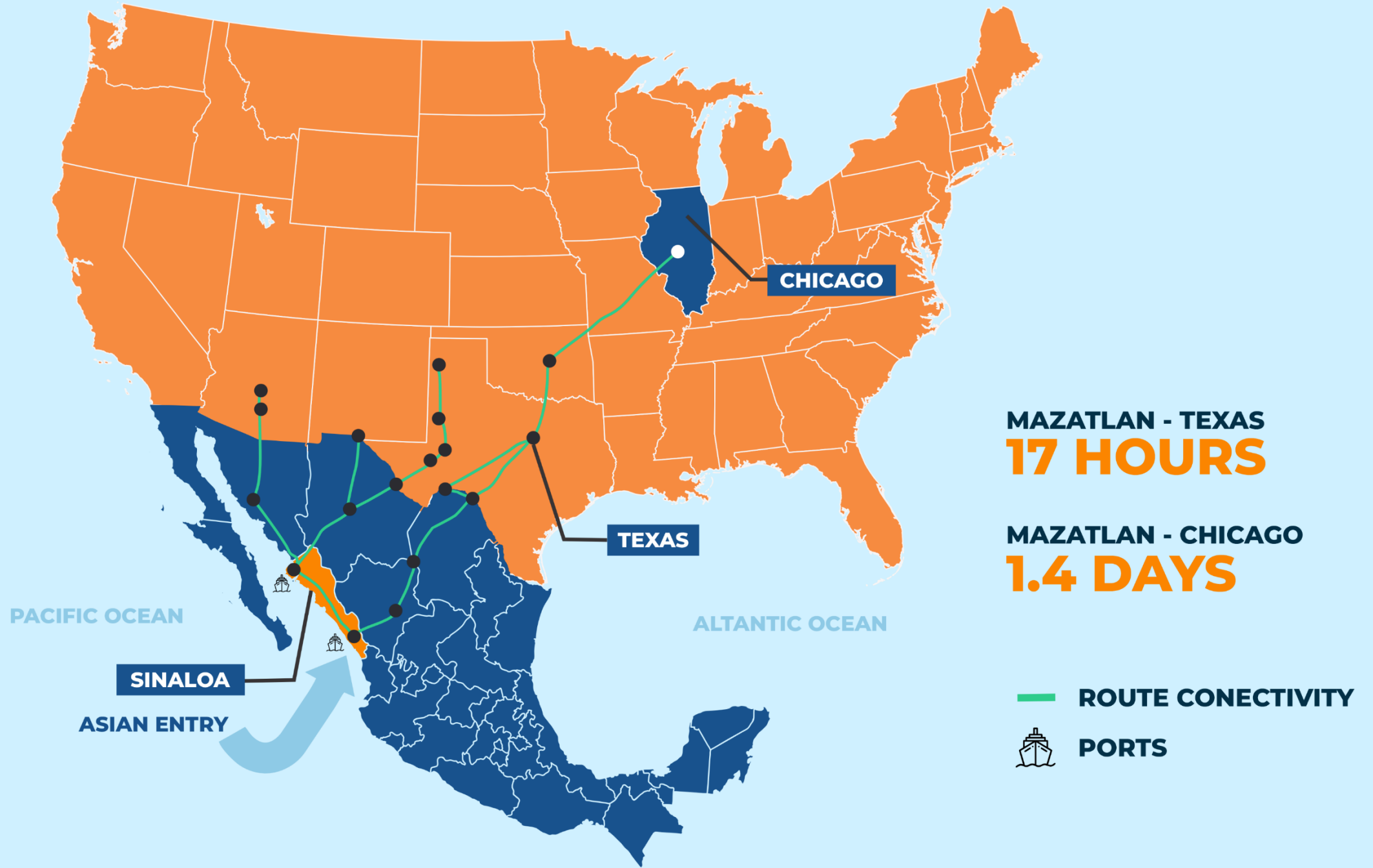


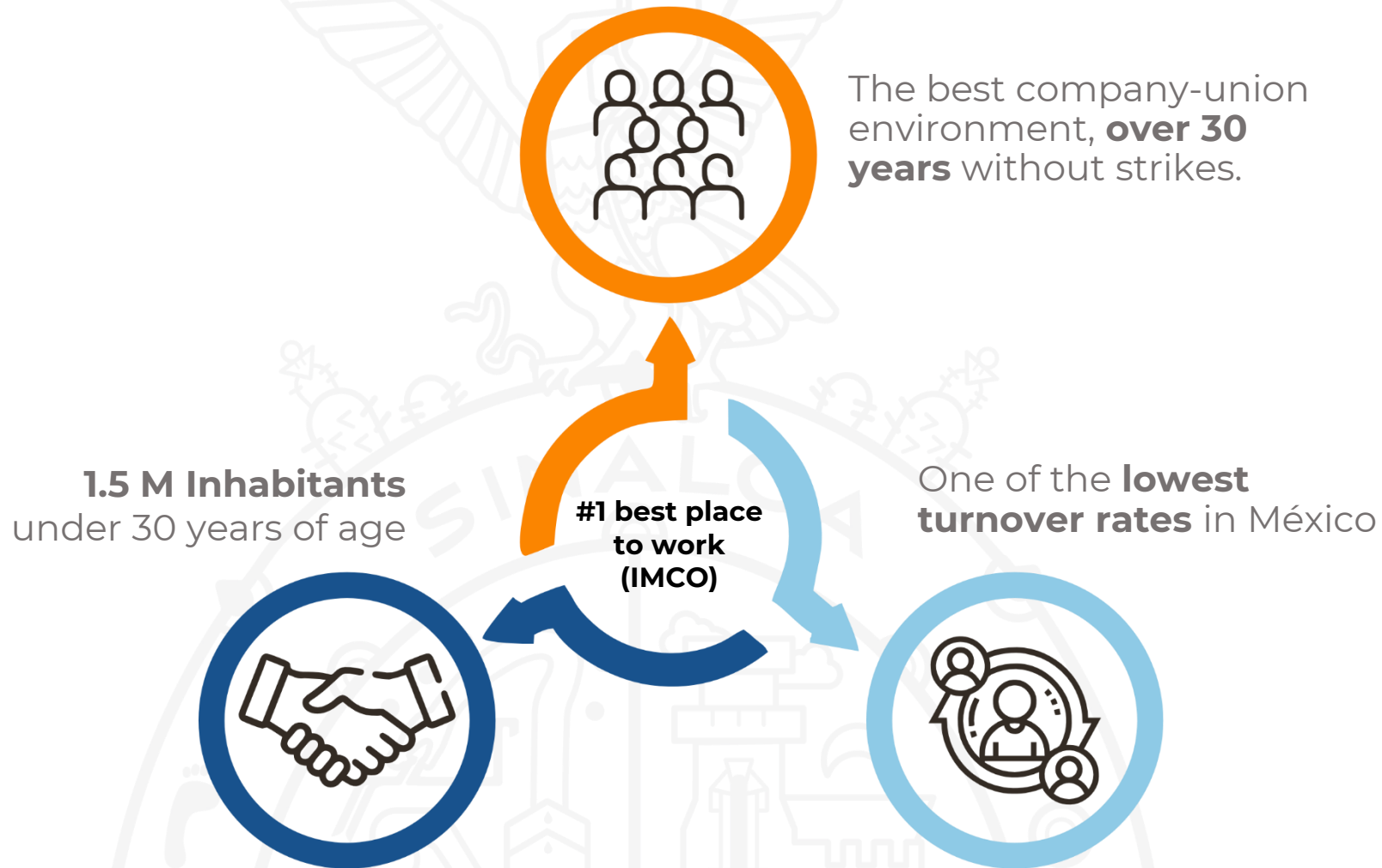
SINALOYA



SINALOYA | **ECONOMÍA**
GOBIERNO DEL ESTADO | Secretaría de Economía



The Best Human Talent at Work



Infrastructure



- More than 4,900 acres available in Sinaloa for industrial development



- More than 30 industrial parks and logistics centers, distributed throughout the state



- Natural Gas, availability for the entire State through, 397 miles of 24" gas pipelines



- 12 hydroelectrical and thermoelectrical plants and 2 power generating plants that use natural gas based, capacity more than 3,890 MW/hr



- 11 rivers and 12 dams throughout the state with 776.92 billion ft³ capacity

- Some existing foreign companies in Sinaloa:

Manufacturing: Sumitomo, Aptiv
(Delphi), Walbro, Insertech, Hikam

Agroindustry: Mitsui, Sakata, Bayer, Monsanto

Retail: World brands.

Hotel Chains: Marriott, Hyatt, Hilton, Accor.

- 2022 FDI reached a **historic 867 Mln USD**
- Proman and Mexinol Projects.
- Caxxor port project.

Manufacturing in Sinaloa:

- **15 thousand jobs** in the sector.
- Industrial Processes :
 - Autoparts assembly
 - Light truck assembly
 - Electronics
 - Machining
 - Molding
 - Robotics
 - Design



10 Ford, Toyota, GM and Lexus models in their 50 versions, that circulate in the TMEC region, **have at least one autopart made in Sinaloa.**



Why Sinaloa?



Ranked as the **best place to work in México** (IMCO 2022)



3 cities in the State ranked among the most **Competitive** in the country
Top 3 in their population categories (CLN- MZT-LM)



4.3% above the national average of 2.9%,
Ranked **Top 10th**, In 2022 the Sinaloa economy **grew up**



The **5th** place in “**rule of law**” based on the World Justice Project (WJP)



480 miles (9hrs) from Arizona
640 miles (13hrs) from Texas



Ford, GM, Nissan, Mitsubishi and Chery have import export operations in the Mazatlan Port.



+ 25,000 graduates each year
Available **Skilled Human Talent**.



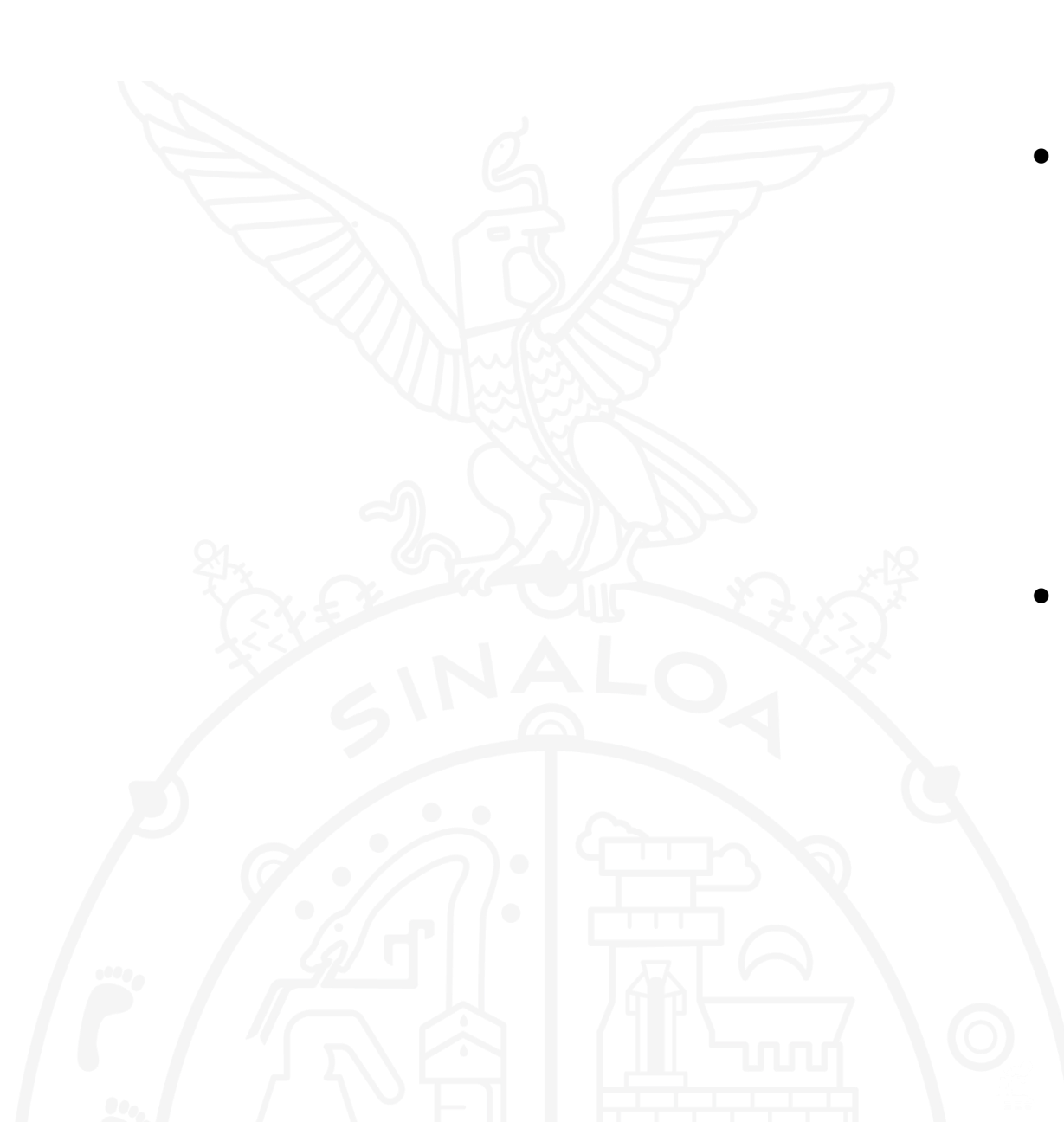
50% of State´s population is belowed **30 years**
Excellent quality of life. (+3 million inhabitants)



10 Ford, Toyota, GM and Lexus models in their 50 versions now driving along the USMCA region, include at least **one autopart assembled in Sinaloa**



86% of Sinaloa´s \$ **4B** in international exports go to **US**

- 
- Sinaloa is a state whose Governor, Ruben Rocha, has a clear vision that when Government, **the private sector and academy work together**, is when society progresses and there is **less poverty** through the creation of better jobs.
 - In Sinaloa we work with investors tailoring incentives to their needs, **like tax exemptions, land, support in personnel recruitment** and more.

Welcome to

COMPETITIVE SINALOA

your **perfect partner**

for manufacturing growth,

Thank you!



SINALOA
GOBIERNO DEL ESTADO

ECONOMÍA
SECRETARÍA DE ECONOMÍA

