



WORLD CITY

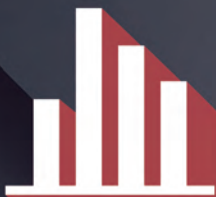
ustradenumbers.com



2021 U.S.

# TRADE NUMBERS

The United States' \$3.77 trillion in two-way trade with the world



Sponsored  
by:



# TIME TO UPGRADE

## Make Sense ...

Let a [ustradenumbers.com](http://ustradenumbers.com) subscription make sense of U.S. trade data



## ... Make Dollars

So you can discover insights to drive your business forward

*Subscribe for monthly updates to U.S. trade. Every port, every country, every export, every import. Starting at about \$10 a month.*

**USTRADENUMBERS.COM**

*Not a lot of dollars.  
Makes a lot of sense.*

[info@ustradenumbers.com](mailto:info@ustradenumbers.com) | 305.441.2244



## For 2020 trade, remember these...

# 10 telling statistics

Well, 2020 was certainly a year to remember. From an international trade standpoint, it could have been far worse. Most of the damage you will see throughout these pages was largely the result of what happened in April, May and June, particularly May, when the United States economy mostly went on lockdown in an effort to beat back the Covid-19 pandemic.

Here are 10 items for you to take away from U.S. TradeNumbers this year:

**1.** U.S. trade fell below \$4 trillion after two years above that mark -- and the United States got a new No. 1 trade partner. (We sprinkle insights like this throughout the pages. You can see this one in the upper right-hand corner of Page 5, part of a two-page World Trade Map spread.)

**2.** Speaking of trade partners, nine of the top 20 actually registered gains in trade in 2020. (You can see which ones in the left-hand column on Page 4.)

**3.** The top 20 airports, seaports and border crossings did the heavy lifting in 2020, accounting for almost two-thirds of all U.S. trade. They are spread across the country, with one state having four, another four having two each and eight having one each. (See the percentage handled by the top airports, seaports and border crossings as well as the state-by-state breakdown on Pages 6-7.)

**4.** For some of the nation's top 20 exports, 2020 was a good year but for most it wasn't. Although there are more than 1,265 categories, these 20 accounted for almost 47 percent of all exports in 2020. (See which ones prospered and which ones didn't, Pages 8-9.)

**5.** While the top U.S. export dropped almost \$54 billion from 2019, the top 21 still topped \$10 billion. (See a list of the top 50 on Page 14.)

**6.** Two top 50 imports fell below \$100 billion in value in 2020, one we use every day and one we needed far less frequently. One other remained above \$100 billion -- passenger vehicles -- while another, which many needed for working

and studying from home, topped \$100 billion. (The list of the top 50 imports is on Page 15.)

**7.** Imports fell for the second consecutive year. (You can see their progression since 1992 with a bar chart on Page 10, part of a two-page spread showing how the top 20 performed.)

**8.** U.S. trade didn't set a record for total trade, exports or imports but it did set one for the trade deficit. (See which countries and which U.S. airports, seaports and border crossings contributed and how much, Pages 12-13.)

**9.** Eleven of the nation's top 25 trade partners are Asian nations, 10 are European nations, two are from North America and another one each come from South America and the continent known as Oceania. (See which ones represent each continent, Page 4-5.)

**10.** While on the page, you can see the European nation whose trade grew the most and which continent had the two nations where trade fell the most.

@TradeDataGuy

### our products

WorldCity has been producing TradeNumbers publications since 2001 for airports, seaports and border crossings across the United States. They are published annually in three formats: the Executive Summary format, a full 64-page magazine format, and a handy pocket-sized version. WorldCity also hosts a website, [ustradenumbers.com](http://ustradenumbers.com), updated monthly with pages of data for more than 200 countries, more than 1,800 specific export and import commodities, and more than 450 airports, seaports and border crossings. WorldCity produces Trade Matters videos on relevant topics, distributed at the company's YouTube channel and across social platforms. WorldCity hosts quarterly Trade Trends webinars and distributes a monthly Trade Talk newsletter for specific markets around the country. WorldCity also syndicates its content to airports, seaports and border crossings, updated monthly.

### our people

PRESIDENT: Ken Roberts  
 MANAGEMENT STAFF: Tatiana Panzardi  
 DATA & WEBSITE DEVELOPMENT: George Avelino  
 VIDEO PRODUCTION: George Avelino  
 GRAPHIC DESIGN: Vivian Chavez, Eric Borrazas, Suzette Sullivan, Toni Kirkland, Hiram Henriquez  
 PROOFREADER: Alison Klapper Leon



/ustradenumbers



@ustradenumbers



worldcity



@tradenumbers  
@tradedataguy



/ustradenumbers

### there's more

DOWNLOAD versions of our publications, including this one, at [ustradenumbers.com](http://ustradenumbers.com).

ACCESS up to eight years of data for any export, import, country, airport, seaport or border crossing with a subscription to [ustradenumbers.com](http://ustradenumbers.com).

INVESTIGATE specific exports, imports or countries with an annual subscription at [ustradenumbers.com](http://ustradenumbers.com).

## WORLD CITY

[www.ustradenumbers.com](http://www.ustradenumbers.com)

# 2020 TOP 25 UNITED STATES' TRADE PARTNERS

For monthly updates on worldwide trade partners, visit [ustradenumbers.com](http://ustradenumbers.com).

## TOP 25 COUNTRIES

**86.99%**  
OF ALL U.S. TRADE

### KEY

- ▲ Ranking increased 2019 to 2020
- ▼ Ranking decreased 2019 to 2020
- No change

- ▲ 01. China
- ▼ 02. Mexico
- ▼ 03. Canada
- 04. Japan
- 05. Germany
- 06. South Korea
- 07. United Kingdom
- ▲ 08. Switzerland
- ▲ 09. Taiwan
- ▲ 10. Vietnam
- ▼ 11. India
- ▲ 12. Ireland
- ▼ 13. The Netherlands
- ▼ 14. France
- ▼ 15. Italy
- ▼ 16. Brazil
- 17. Singapore
- ▲ 18. Malaysia
- ▲ 19. Thailand
- ▼ 20. Belgium
- 21. Australia
- 22. Hong Kong
- ▲ 23. Spain
- ▲ 24. Indonesia
- ▼ 25. Israel

**CHART OF TOP 50 TRADE PARTNERS, MORE DETAILS, PAGE 12**

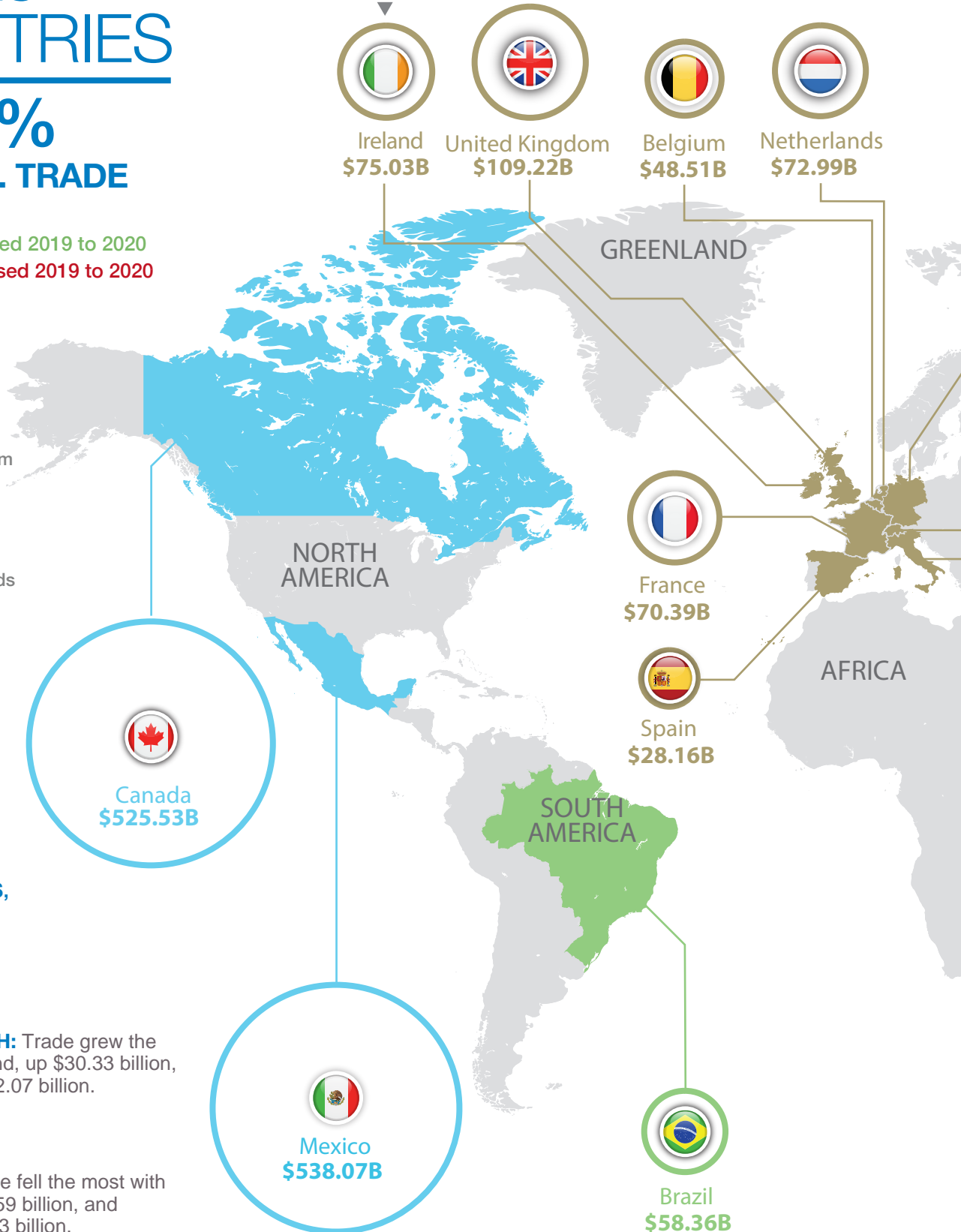


**LARGEST GROWTH:** Trade grew the most with Switzerland, up \$30.33 billion, and Vietnam, up \$12.07 billion.



**TRADE LOSS:** Trade fell the most with Canada, down \$86.59 billion, and Mexico, down \$76.43 billion.

Circle size represents total trade with country



U.S. SUMMARY

TOTAL TRADE IN TRILLIONS  
**\$3.77**  
 -9.06% ▼

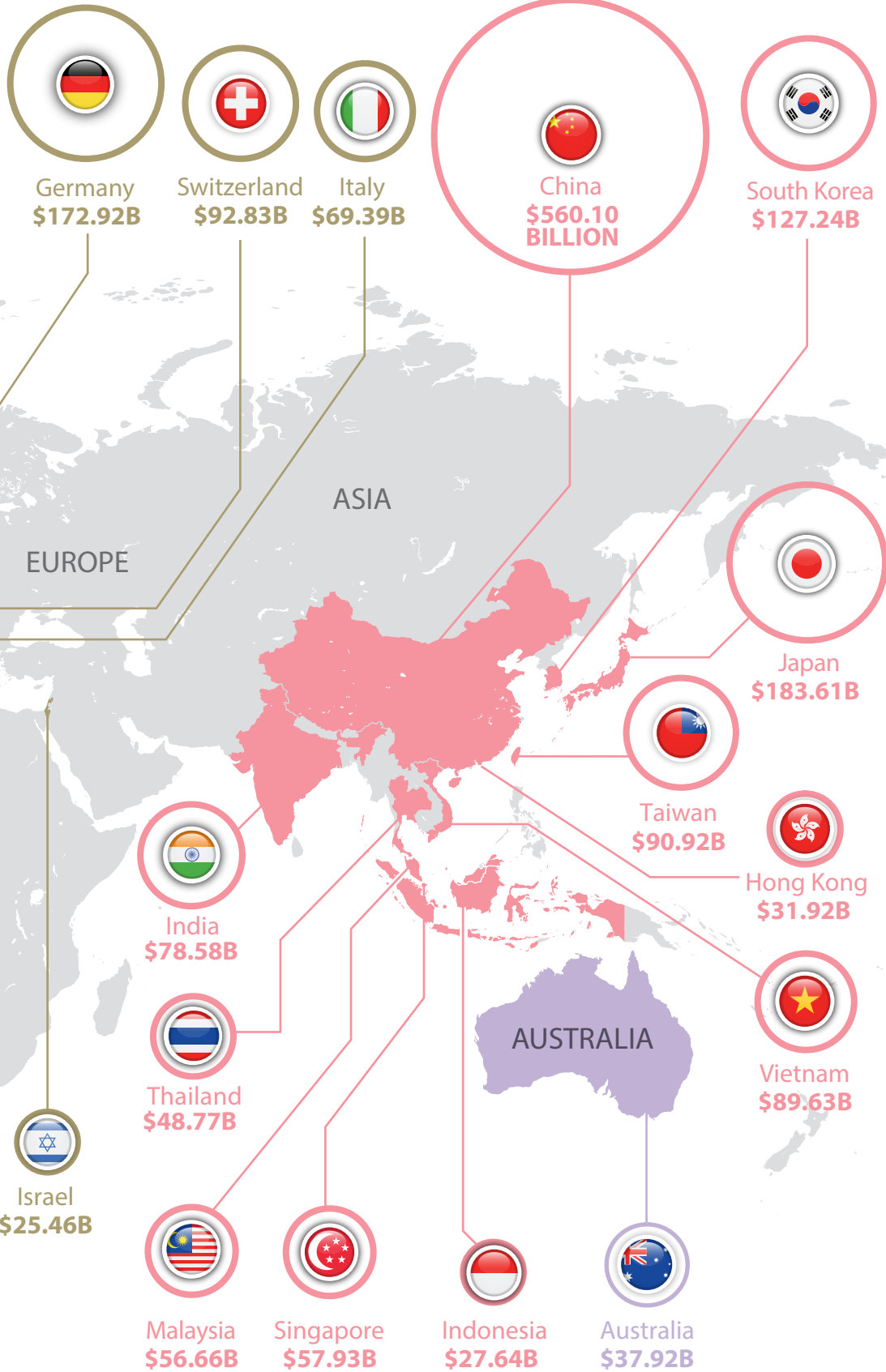
EXPORTS IN TRILLIONS  
**\$1.43**  
 -12.99% ▼

IMPORTS IN TRILLIONS  
**\$2.34**  
 -6.48% ▼

DEFICIT IN BILLIONS  
**\$13.07**

KEY TAKEAWAY

After two years above \$4 trillion, U.S. total trade fell to \$3.77 trillion in 2020. China replaced Mexico as the United States' top trade partner.



TOP 25 EXPORT PARTNERS

85.08% OF ALL U.S. EXPORTS

01. Canada
02. Mexico
03. China
04. Japan
05. United Kingdom
06. Germany
07. South Korea
08. The Netherlands
09. Brazil
- ▲ 10. Taiwan
11. Belgium
12. India
- ▼ 13. France
- ▼ 14. Singapore
15. Hong Kong
16. Australia
17. Italy
- ▲ 18. Switzerland
- ▼ 19. United Arab Emirates
- ▲ 20. Spain
- ▼ 21. Chile
- ▲ 22. Malaysia
- ▼ 23. Colombia
24. Saudi Arabia
25. Thailand

TOP 25 IMPORT PARTNERS

89.12% OF ALL U.S. IMPORTS

01. China
02. Mexico
03. Canada
04. Japan
05. Germany
- ▲ 06. Vietnam
- ▼ 07. South Korea
- ▲ 08. Switzerland
09. Ireland
- ▲ 10. Taiwan
- ▼ 11. India
- ▼ 12. United Kingdom
- ▼ 13. Italy
- ▲ 14. Malaysia
- ▼ 15. France
16. Thailand
- ▲ 17. Singapore
18. The Netherlands
- ▼ 19. Brazil
- ▲ 20. Belgium
- ▲ 21. Indonesia
- ▼ 22. Russia
- ▲ 23. Spain
- ▼ 24. Israel
- ▲ 25. Australia

## TOP 20 PORTS

**63.83%**  
OF ALL U.S. TRADE

KEY

-   
Seaport
-   
Airport
-   
Border Crossing

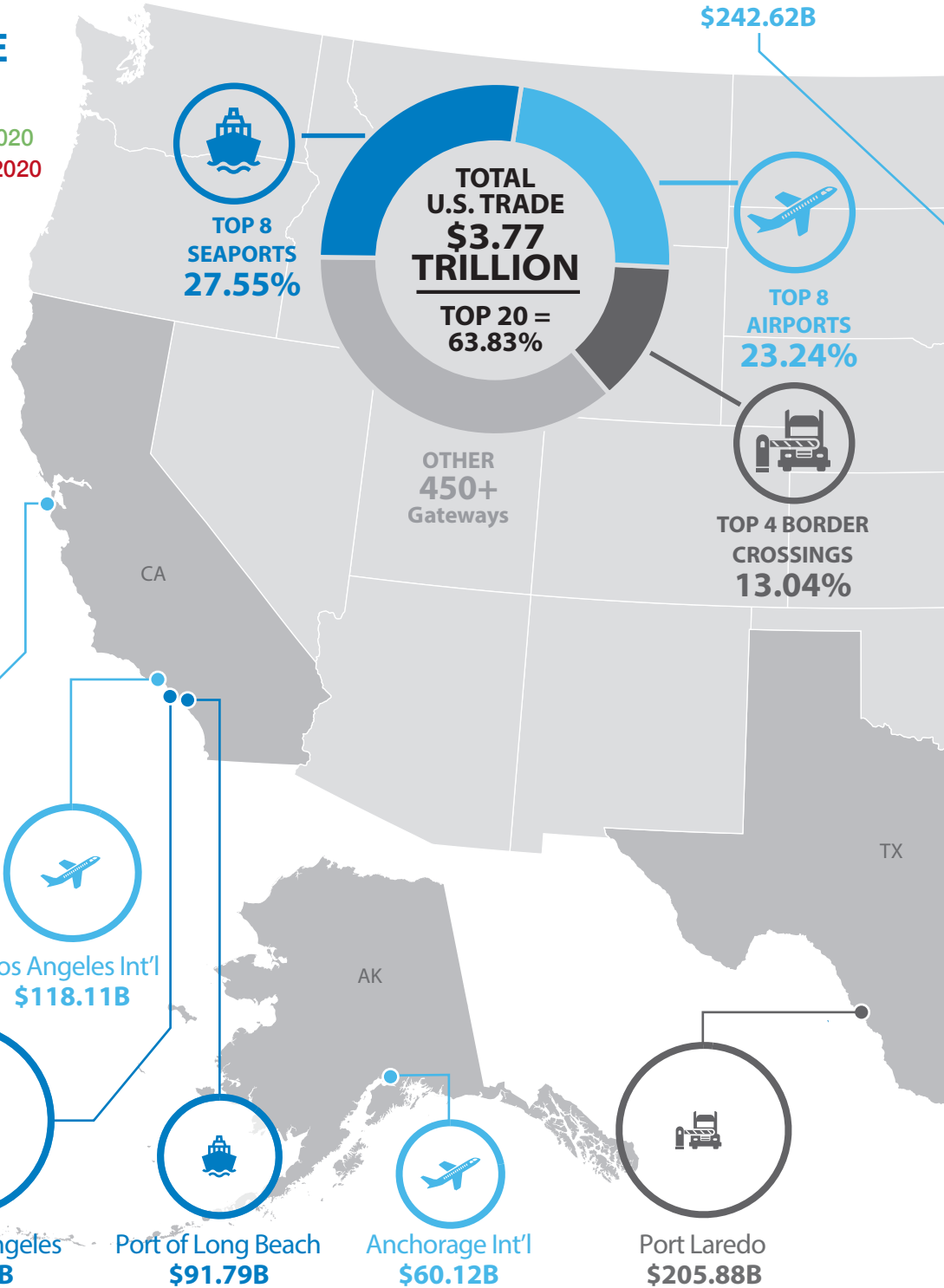
Circle size represents total trade with port



KEY

- ▲ Ranking increased 2019 to 2020
- ▼ Ranking decreased 2019 to 2020
- No change

01. Port of Los Angeles
- ▲ 02. Chicago O'Hare Int'l
- ▲ 03. JFK Int'l
- ▼ 04. Port Laredo
- ▼ 05. Port of Newark
- ▲ 06. Detroit Ambassador Bridge
- ▼ 07. Port of Houston
08. Port of New Orleans
09. Los Angeles Int'l
10. Port of Savannah
- ▲ 11. Port of Long Beach
- ▼ 12. Port Huron Blue Water Bridge
13. Port of Charleston
- ▲ 14. Cleveland Int'l
- ▼ 15. Buffalo Peace Bridge
16. Port of Virginia
- ▲ 17. Anchorage Int'l
18. San Francisco Int'l
19. Atlanta Int'l
- ▲ 20. Miami Int'l



**SUMMARY**

TOTAL TRADE  
IN TRILLIONS  
**\$3.77**  
-9.06% ▼

EXPORTS  
IN TRILLIONS  
**\$1.43**  
-12.99% ▼

IMPORTS  
IN TRILLIONS  
**\$2.34**  
-6.48% ▼

DEFICIT  
IN TRILLIONS  
**-905.17**

**KEY TAKEAWAY**

U.S. trade grew at four of the nation's top 20 — all airports, with Chicago, Cleveland and Anchorage tied to Covid-19 and JFK to gold imports.



Detroit  
Ambassador  
Bridge  
**\$129.58B**



Port Huron  
Blue Water Bridge  
**\$85.43B**



Cleveland Int'l  
**\$70.82B**



Buffalo Peace  
Bridge  
**\$70.40B**



JFK Int'l  
**\$217.05B**

**TOP 20  
PORTS FOR EXPORTS**

**62.82%** OF ALL U.S. EXPORTS

- 01. Port Laredo
- ▲ 02. JFK Int'l
- ▼ 03. Port of Houston
- 04. Detroit Ambassador Bridge
- 05. Port of New Orleans
- ▲ 06. Chicago O'Hare Int'l
- ▼ 07. Low-Value Exports
- ▼ 08. Los Angeles Int'l
- ▲ 09. Cleveland Int'l
- ▼ 10. Port Huron Blue Water Bridge
- ▼ 11. Buffalo Peace Bridge
- ▲ 12. Port of Corpus Christi
- ▲ 13. San Francisco Int'l
- ▼ 14. Miami Int'l
- ▼ 15. Port of Charleston
- ▼ 16. Port of New York
- 17. Port of Long Beach
- ▼ 18. Port of Los Angeles
- ▼ 19. Port of Savannah
- ▲ 20. Port of Virginia

**TOP 20  
PORTS FOR IMPORTS**

**68.02%** OF ALL U.S. IMPORTS

- 01. Port of Los Angeles
- ▲ 02. Chicago O'Hare Int'l
- ▼ 03. Port of Newark
- ▲ 04. JFK Int'l
- ▼ 05. Port Laredo
- 06. Port of Savannah
- ▲ 07. Los Angeles Int'l
- ▲ 08. Port of Long Beach
- ▼ 09. Detroit Ambassador Bridge
- ▼ 10. Port of New Orleans
- ▼ 11. Port of Houston
- ▲ 12. Port of Charleston
- ▼ 13. Port Huron Blue Water Bridge
- 14. Port of Virginia
- ▲ 15. Anchorage Int'l
- ▲ 16. Atlanta Int'l
- ▼ 17. Port of Baltimore
- ▼ 18. Port of Tacoma
- 19. Buffalo Peace Bridge
- ▲ 20. Otay Mesa Border Crossing



Port of Newark  
**\$185.47B**



Port of Virginia  
**\$69B**



Port of  
Charleston  
**\$78.35B**



Port of Savannah  
**\$104.67B**



Port of Houston  
**\$126.55B**



Port of New Orleans  
**\$121.91B**



Atlanta Int'l  
**\$54.56B**



Miami Int'l  
**\$53.44B**

Unwrought platinum in various forms  
**\$9.83 Billion**  
 Percentage 1-year change 108.10%

**3** EXPORTS ABOVE \$50 BILLION

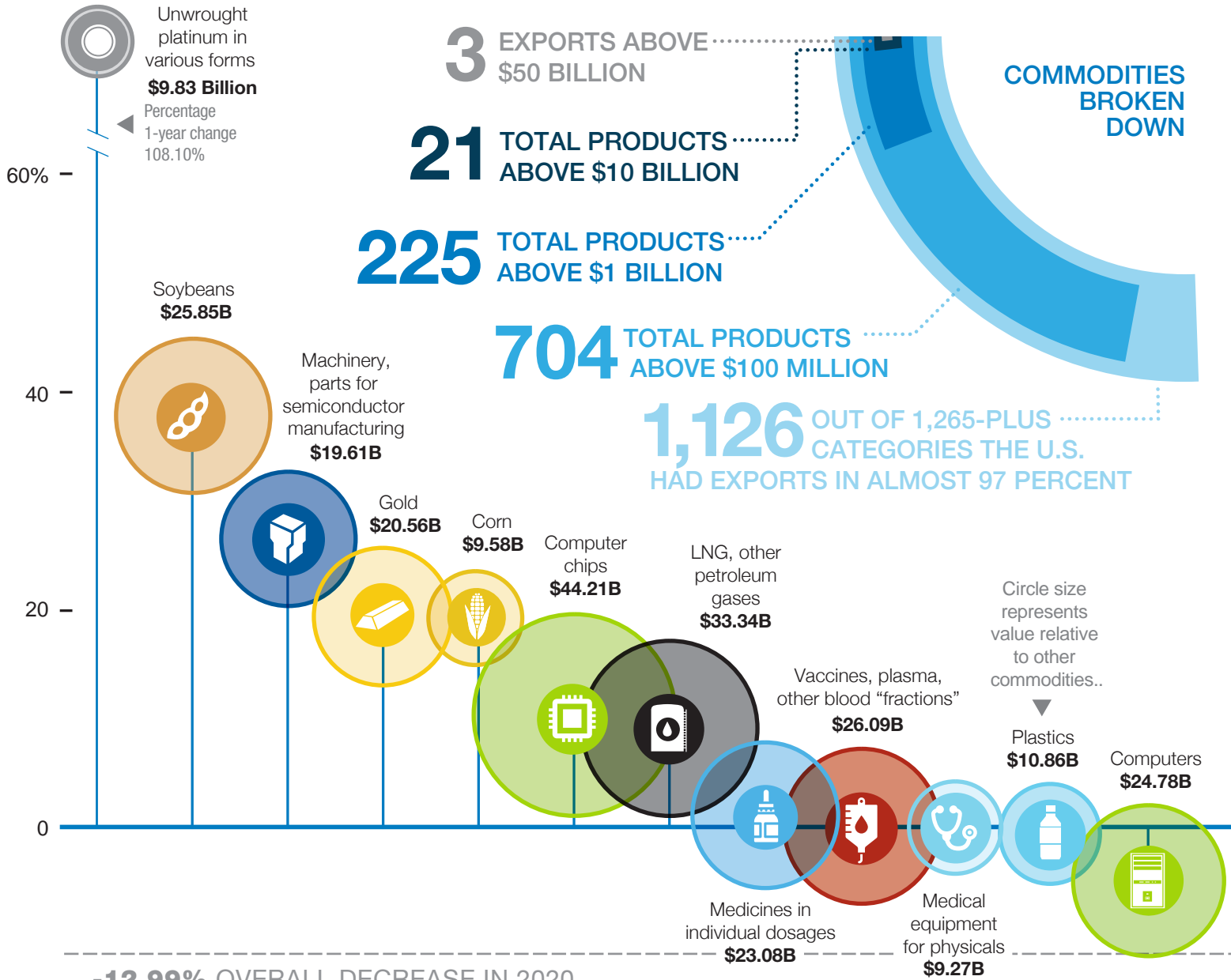
**21** TOTAL PRODUCTS ABOVE \$10 BILLION

**225** TOTAL PRODUCTS ABOVE \$1 BILLION

**704** TOTAL PRODUCTS ABOVE \$100 MILLION

**1,126** OUT OF 1,265-PLUS CATEGORIES THE U.S. HAD EXPORTS IN ALMOST 97 PERCENT

COMMODITIES  
 BROKEN  
 DOWN



**-12.99% OVERALL DECREASE IN 2020**

**ALMOST THREE DECADES OF GROWTH**



PERCENTAGE OF U.S. TRADE IN 2020 THAT WAS AN EXPORT...

**38%**



TOTAL U.S. EXPORTS  
\$1.43 TRILLION

1-YEAR CHANGE  
-12.99%

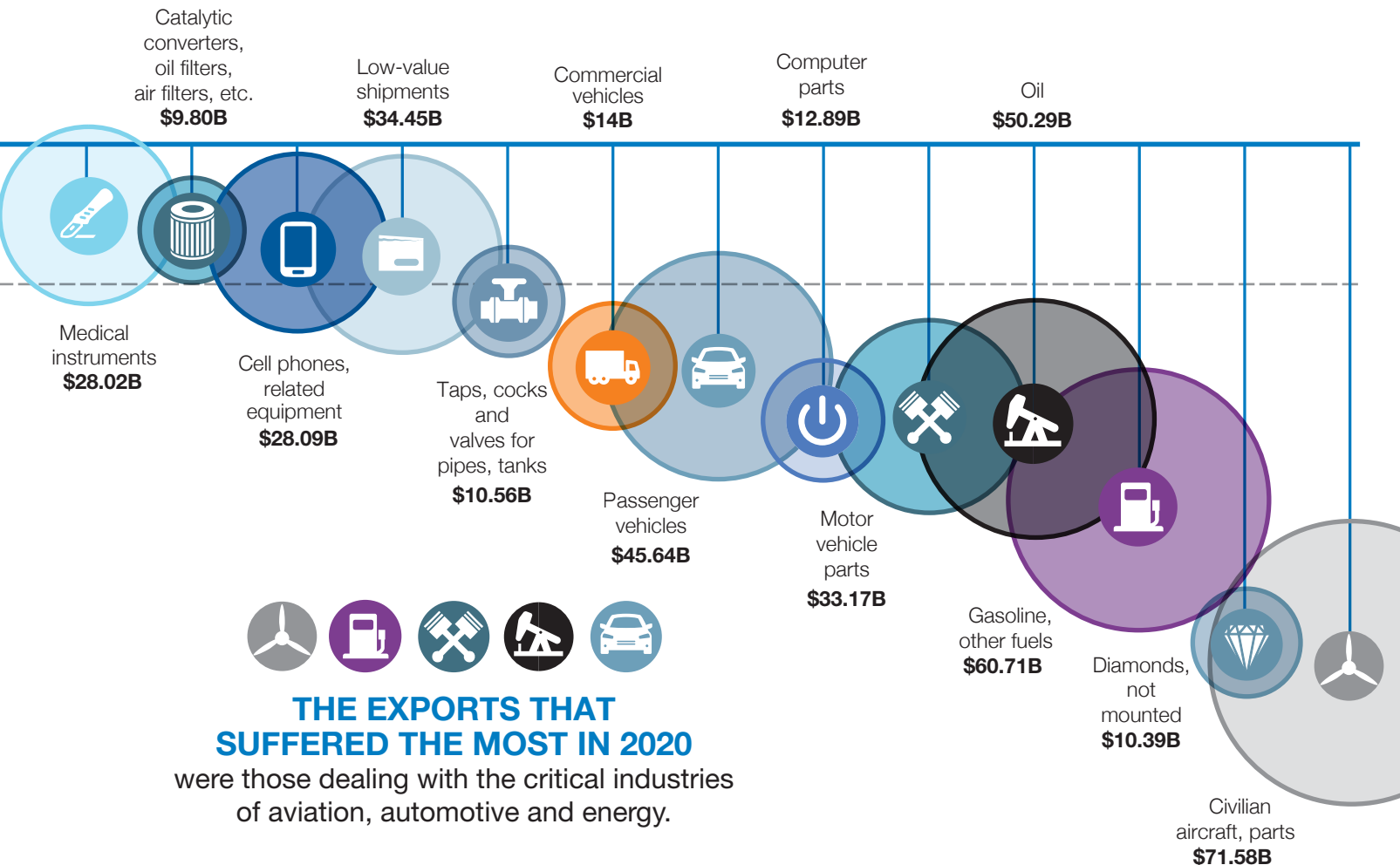
TOP 25 EXPORTS REPRESENT  
46.57% OF ALL EXPORTS

CHART OF TOP 50 U.S. EXPORTS, PAGE 14

# 2020 UNITED STATES' TOP 25 EXPORTS

## THE PACE OF CHANGE NINE INCREASED, 16 DECREASED

Among the nation's top 25 exports in 2020, the No. 1-ranked aircraft category fell the most by percentage and value. But, despite and sometimes because of Covid-19, it was a good year for commodities like platinum, soybeans, gold and corn.



Articles with precious metals  
**\$26.32B**  
 1,533.69%

PPE, other textile articles  
**\$19.54B**  
 278.94%

**2** TOTAL PRODUCTS ABOVE \$100 BILLION

**42** TOTAL PRODUCTS ABOVE \$10 BILLION

**310** TOTAL PRODUCTS ABOVE \$1 BILLION

**808** TOTAL PRODUCTS ABOVE \$100 MILLION

COMMODITIES  
 BROKEN  
 DOWN

50% — Percentage 1-year change

40 —  
 30 —  
 20 —  
 10 —  
 0 —

Gold  
**\$33.80B**  
 249.15%

Digital storage devices  
**\$14.98B**

Computer parts  
**\$23.38B**

Vaccines, plasma, other blood "fractions"  
**\$51.26B**

Computers  
**\$103.65B**

**1,228** OUT OF 1,265-PLUS CATEGORIES, THE U.S HAD IMPORTS IN ALMOST 97 PERCENT

Medicines in individual dosages  
**\$81.37B**

Furniture, parts  
**\$25.55B**

Power supplies, transformers  
**\$15.75B**

Medical instruments  
**\$26.91B**

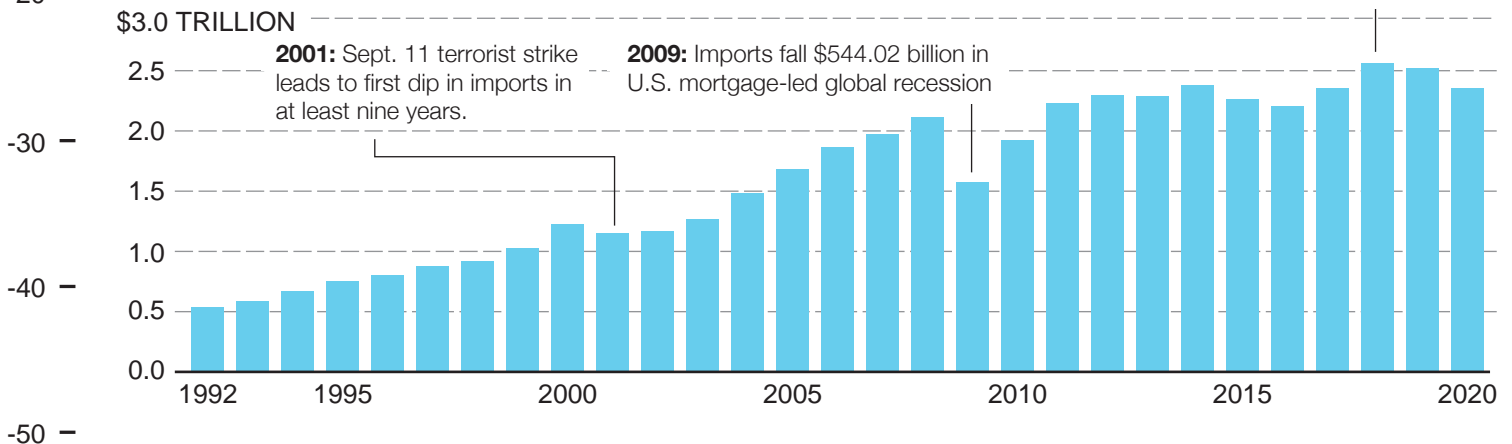
Computer chips  
**\$31.78B**

**-6.51% OVERALL DECREASE IN 2020**

-10 —

## ALMOST THREE DECADES OF GROWTH

**2018:** Imports set current record, \$2.54 trillion.



TOTAL U.S. IMPORTS  
**\$2.34 TRILLION**

1-YEAR CHANGE  
**-6.51%**

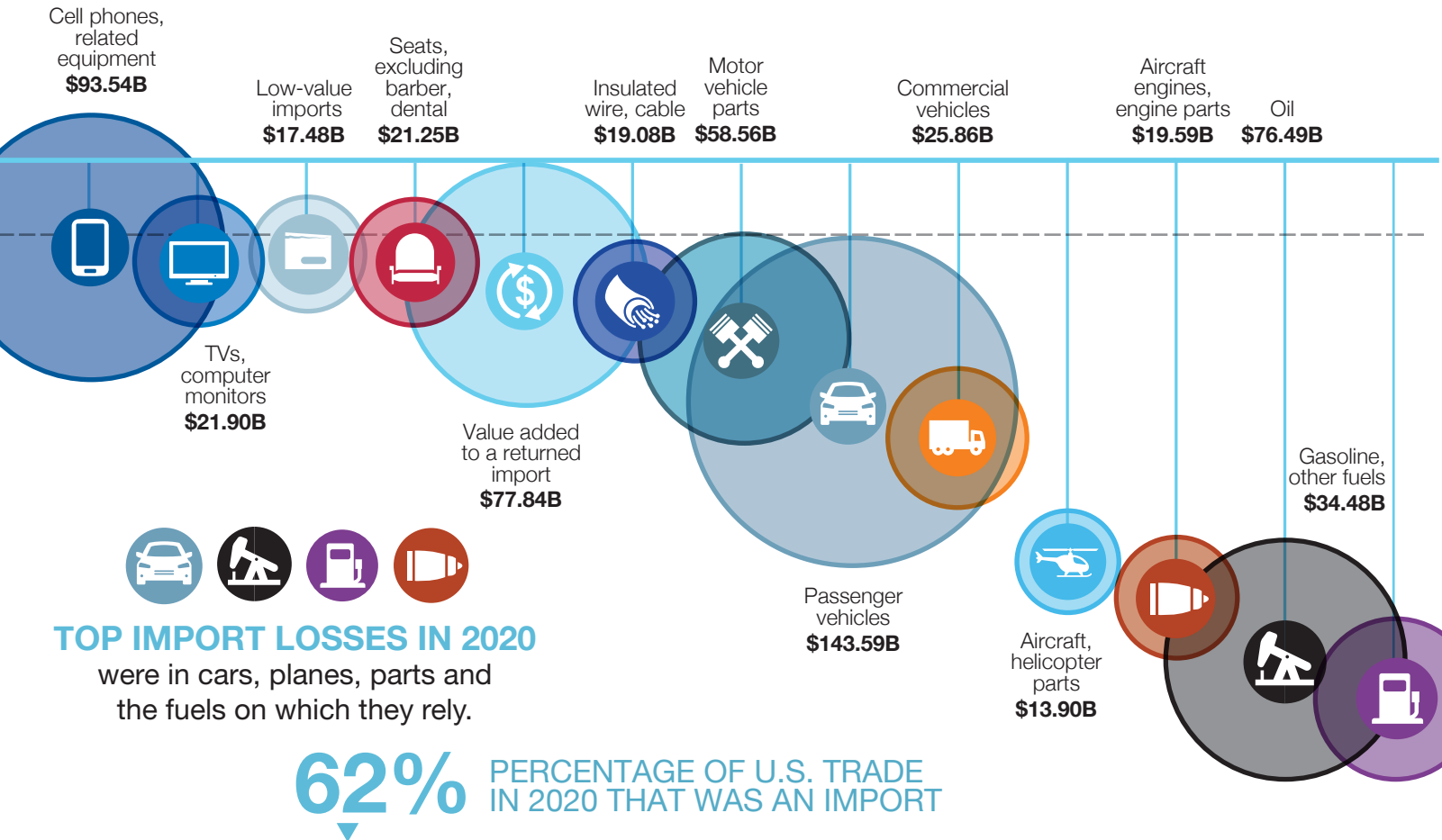
TOP 25 IMPORTS REPRESENT  
**46.06%**  
 OF ALL IMPORTS

CHART OF TOP 50 U.S. IMPORTS,  
**PAGE 15**

# 2020 UNITED STATES' TOP 25 IMPORTS

## THE PACE OF CHANGE TEN INCREASED, 15 DECREASED

Many of the imports that gained in value in 2020 represent a newer economy than those that fell. It was a good year for computers and computer parts, medicines and vaccines, and digital storage devices; but a tough year for oil, motor vehicle parts, aircraft engines, and passenger and commercial vehicles.



# Top 50 U.S. Trade Partners

1-YR CHG	2020 RANK	COUNTRY	TOTAL TRADE 2020	TOTAL TRADE 2019	CHANGE	TOTAL EXPORTS 2020	TOTAL EXPORTS 2019	CHANGE	TOTAL IMPORTS 2020	TOTAL IMPORTS 2019	CHANGE	SURPLUS/(DEFICIT) 2020
		<b>World Total</b>	<b>\$3,767,984,637,684</b>	<b>\$4,143,576,549,932</b>	<b>-9.06%</b>	<b>\$1,431,405,492,962</b>	<b>\$1,645,174,334,756</b>	<b>-12.99%</b>	<b>\$2,336,579,144,722</b>	<b>\$2,498,402,215,176</b>	<b>-6.48%</b>	<b>(\$905,173,651,760)</b>
2	1	China	\$560,097,542,227	\$558,870,214,480	0.22%	\$124,648,519,373	\$106,626,774,557	16.90%	\$435,449,022,854	\$452,243,439,923	-3.71%	(\$310,800,503,481)
-1	2	Mexico	\$538,066,059,696	\$614,500,090,695	-12.44%	\$212,671,750,902	\$256,374,085,277	-17.05%	\$325,394,308,794	\$358,126,005,418	-9.14%	(\$112,722,557,892)
-1	3	Canada	\$525,530,649,231	\$612,117,585,003	-14.15%	\$255,148,866,895	\$292,381,889,887	-12.73%	\$270,381,782,336	\$319,735,695,116	-15.44%	(\$15,232,915,441)
0	4	Japan	\$183,609,678,935	\$218,289,173,540	-15.89%	\$64,097,721,756	\$74,652,745,438	-14.14%	\$119,511,957,179	\$143,636,428,102	-16.80%	(\$55,414,235,423)
0	5	Germany	\$172,915,126,208	\$187,758,340,992	-7.91%	\$57,795,070,793	\$60,296,235,156	-4.15%	\$115,120,055,415	\$127,462,105,836	-9.68%	(\$57,324,984,622)
0	6	South Korea	\$127,237,851,900	\$134,408,459,125	-5.33%	\$51,218,022,866	\$56,897,327,116	-9.98%	\$76,019,829,034	\$77,511,132,009	-1.92%	(\$24,801,806,168)
0	7	United Kingdom	\$109,215,792,476	\$132,343,539,091	-17.48%	\$59,009,599,581	\$69,156,507,757	-14.67%	\$50,206,192,895	\$63,187,031,334	-20.54%	\$8,803,406,686
8	8	Switzerland	\$92,827,325,614	\$62,497,214,913	48.53%	\$18,044,487,392	\$17,917,303,360	0.71%	\$74,782,838,222	\$44,579,911,553	67.75%	(\$56,738,350,830)
1	9	Taiwan	\$90,923,991,575	\$85,475,112,684	6.37%	\$30,496,319,559	\$31,218,810,786	-2.31%	\$60,427,672,016	\$54,256,301,898	11.37%	(\$29,931,352,457)
3	10	Vietnam	\$89,634,391,407	\$77,563,395,358	15.56%	\$9,989,358,121	\$10,883,073,324	-8.21%	\$79,645,033,286	\$66,680,322,034	19.44%	(\$69,655,675,165)
-2	11	India	\$78,584,271,027	\$92,075,065,073	-14.65%	\$27,394,588,267	\$34,409,589,669	-20.39%	\$51,189,682,760	\$57,665,475,404	-11.23%	(\$23,795,094,493)
3	12	Ireland	\$75,031,322,261	\$70,799,747,130	5.98%	\$9,557,972,789	\$9,031,704,401	5.83%	\$65,473,349,472	\$61,768,042,729	6.00%	(\$55,915,376,683)
-2	13	The Netherlands	\$72,990,628,149	\$80,998,908,740	-9.89%	\$45,520,530,874	\$51,232,693,826	-11.15%	\$27,470,097,275	\$29,766,214,914	-7.71%	\$18,050,433,599
-6	14	France	\$70,388,857,763	\$95,220,360,507	-26.08%	\$27,379,527,959	\$37,770,912,378	-27.51%	\$43,009,329,804	\$57,449,448,129	-25.14%	(\$15,629,801,845)
-3	15	Italy	\$69,386,593,004	\$80,949,898,509	-14.28%	\$19,921,650,935	\$23,790,181,472	-16.26%	\$49,464,942,069	\$57,159,717,037	-13.46%	(\$29,543,291,134)
-2	16	Brazil	\$58,357,990,651	\$73,936,383,758	-21.07%	\$35,046,884,792	\$43,083,295,641	-18.65%	\$23,311,105,859	\$30,853,088,117	-24.44%	\$11,735,778,933
0	17	Singapore	\$57,925,926,332	\$57,930,597,545	-0.01%	\$27,086,358,531	\$31,549,569,594	-14.15%	\$30,839,567,801	\$26,381,027,951	16.90%	(\$3,753,209,270)
1	18	Malaysia	\$56,662,872,017	\$53,687,119,505	5.54%	\$12,498,483,739	\$13,120,000,929	-4.74%	\$44,164,388,278	\$40,567,118,576	8.87%	(\$31,665,904,539)
1	19	Thailand	\$48,768,910,362	\$46,768,952,332	4.28%	\$11,169,633,178	\$13,307,863,927	-16.07%	\$37,599,277,184	\$33,461,088,405	12.37%	(\$26,429,644,006)
-2	20	Belgium	\$48,507,482,941	\$54,940,601,536	-11.71%	\$27,621,416,205	\$34,768,981,367	-20.56%	\$20,886,066,736	\$20,171,620,169	3.54%	\$6,735,349,469
0	21	Australia	\$37,923,213,035	\$36,879,594,134	2.83%	\$23,488,996,803	\$26,025,178,105	-9.75%	\$14,434,216,232	\$10,854,416,029	32.98%	\$9,054,780,571
0	22	Hong Kong	\$31,920,398,567	\$35,513,277,798	-10.12%	\$23,986,487,694	\$30,800,047,888	-22.12%	\$7,933,910,873	\$4,713,229,910	68.33%	\$16,052,576,821
1	23	Spain	\$28,159,703,567	\$31,896,153,176	-11.71%	\$12,870,077,538	\$15,101,427,454	-14.78%	\$15,289,626,029	\$16,794,725,722	-8.96%	(\$2,419,548,491)
3	24	Indonesia	\$27,642,724,290	\$27,909,151,487	-0.95%	\$7,415,716,994	\$7,758,071,945	-4.41%	\$20,227,007,296	\$20,151,079,542	0.38%	(\$12,811,290,302)
-2	25	Israel	\$25,464,630,716	\$33,883,741,377	-24.85%	\$10,188,739,391	\$14,376,811,264	-29.13%	\$15,275,891,325	\$19,506,930,113	-21.69%	(\$5,087,151,934)
3	26	Chile	\$22,879,556,435	\$26,170,054,844	-12.57%	\$12,766,220,443	\$15,776,203,507	-19.08%	\$10,113,335,992	\$10,393,851,337	-2.70%	\$2,652,884,451
-2	27	Colombia	\$22,839,604,972	\$28,917,832,215	-21.02%	\$12,063,010,195	\$14,780,136,220	-18.38%	\$10,776,594,777	\$14,137,695,995	-23.77%	\$1,286,415,418
-2	28	Russia	\$21,727,014,540	\$28,071,505,493	-22.60%	\$4,883,765,601	\$5,786,748,446	-15.60%	\$16,843,248,939	\$22,284,757,047	-24.42%	(\$11,959,483,338)
3	29	Turkey	\$21,022,970,903	\$20,688,307,633	1.62%	\$10,007,520,758	\$10,044,692,645	-0.37%	\$11,015,450,145	\$10,643,614,988	3.49%	(\$1,007,929,387)
-2	30	Saudi Arabia	\$20,170,135,963	\$27,732,061,988	-27.27%	\$11,177,130,750	\$14,289,207,045	-21.78%	\$8,993,005,213	\$13,442,854,943	-33.10%	\$2,184,125,537
0	31	Philippines	\$18,914,040,165	\$21,439,541,841	-11.78%	\$7,764,459,606	\$8,660,368,357	-10.34%	\$11,149,580,559	\$12,779,173,484	-12.75%	(\$3,385,120,953)
-2	32	United Arab Emirates	\$17,829,983,885	\$24,390,643,505	-26.90%	\$14,758,659,096	\$20,038,096,190	-26.35%	\$3,071,324,789	\$4,352,547,315	-29.44%	\$11,687,334,307
1	33	Sweden	\$17,200,567,433	\$16,503,690,432	4.22%	\$4,689,950,861	\$4,356,132,285	7.66%	\$12,510,616,572	\$12,147,558,147	2.99%	(\$7,820,665,711)
5	34	South Africa	\$15,824,990,838	\$13,132,649,238	20.50%	\$4,454,774,311	\$5,333,715,145	-16.48%	\$11,370,216,527	\$7,798,934,093	45.79%	(\$6,915,442,216)
-2	35	Austria	\$15,051,635,940	\$18,920,194,857	-20.45%	\$3,431,921,691	\$5,747,813,849	-40.29%	\$11,619,714,249	\$13,172,381,008	-11.79%	(\$8,187,792,558)
2	36	Denmark	\$14,701,238,078	\$14,191,234,175	3.59%	\$3,057,924,643	\$3,159,869,882	-3.23%	\$11,643,313,435	\$11,031,364,293	5.55%	(\$8,585,388,792)
0	37	Poland	\$13,573,688,163	\$14,344,456,169	-5.37%	\$4,965,098,079	\$5,963,325,835	-16.74%	\$8,608,590,084	\$8,381,130,334	2.71%	(\$3,643,492,005)
-3	38	Peru	\$13,208,243,800	\$15,832,158,236	-16.57%	\$7,685,799,206	\$9,687,251,261	-20.66%	\$5,522,444,594	\$6,144,906,975	-10.13%	\$2,163,354,612
-3	39	Dominican Republic	\$12,789,916,790	\$14,762,003,674	-13.36%	\$7,604,760,178	\$9,207,769,185	-17.41%	\$5,185,156,612	\$5,554,234,489	-6.64%	\$2,419,603,566
2	40	Costa Rica	\$11,091,454,109	\$11,355,546,169	-2.33%	\$5,733,256,527	\$6,205,931,348	-7.62%	\$5,358,197,582	\$5,149,614,821	4.05%	\$375,058,945
0	41	Ecuador	\$10,185,238,708	\$12,487,983,959	-18.44%	\$4,245,204,246	\$5,533,286,746	-23.28%	\$5,940,034,462	\$6,954,697,213	-14.59%	(\$1,694,830,216)
-2	42	Argentina	\$10,108,370,949	\$12,995,938,208	-22.22%	\$5,950,060,466	\$8,078,856,733	-26.35%	\$4,158,310,483	\$4,917,081,475	-15.43%	\$1,791,749,983
0	43	Guatemala	\$9,698,901,822	\$10,819,854,030	-10.36%	\$5,857,927,166	\$6,830,465,440	-14.24%	\$3,840,974,656	\$3,989,388,590	-3.72%	\$2,016,952,510
4	44	Czech Republic	\$8,522,137,367	\$8,329,999,744	2.31%	\$2,985,174,366	\$2,790,470,678	6.98%	\$5,536,963,001	\$5,539,529,066	-0.05%	(\$2,551,788,635)
0	45	Honduras	\$8,066,195,499	\$10,301,074,988	-21.70%	\$4,206,697,277	\$5,475,096,206	-23.17%	\$3,859,498,222	\$4,825,978,782	-20.03%	\$347,199,055
0	46	Bangladesh	\$7,919,414,411	\$9,014,743,018	-12.15%	\$1,844,186,696	\$2,327,031,041	-20.75%	\$6,075,227,715	\$6,687,711,977	-9.16%	(\$4,231,041,019)
8	47	Hungary	\$7,409,542,330	\$7,231,456,208	2.46%	\$2,115,867,318	\$1,917,535,992	10.34%	\$5,293,675,012	\$5,313,920,216	-0.38%	(\$3,177,807,694)
5	48	New Zealand	\$7,404,929,351	\$8,065,036,021	-8.18%	\$3,196,579,575	\$3,950,187,982	-19.08%	\$4,208,349,776	\$4,114,848,039	2.27%	(\$1,011,770,201)
-2	49	Egypt	\$6,937,985,954	\$8,639,235,086	-19.69%	\$4,759,077,431	\$5,485,805,241	-13.25%	\$2,178,908,523	\$3,153,429,845	-30.90%	\$2,580,168,908
8	50	Cambodia	\$6,921,333,505	\$5,875,455,981	17.80%	\$343,625,564	\$513,421,993	-33.07%	\$6,577,707,941	\$5,362,033,988	22.67%	(\$6,234,082,377)

Source: WorldCity analysis of U.S. Census Bureau data

# Top 50 U.S. Ports

1-YR CHNG	2020 RANK	PORT	TOTAL TRADE 2020	TOTAL TRADE 2019	CHANGE	TOTAL EXPORTS 2020	TOTAL EXPORTS 2019	CHANGE	TOTAL IMPORTS 2020	TOTAL IMPORTS 2019	CHANGE	SURPLUS/ (DEFICIT) 2020
		World Total	\$3,767,984,637,684	\$4,143,576,549,932	-9.06%	\$1,431,405,492,962	\$1,645,174,334,756	-12.99%	\$2,336,579,144,722	\$2,498,402,215,176	-6.48%	(\$905,173,651,760)
0	1	Port of Los Angeles	\$260,207,117,901	\$278,208,182,875	-6.47%	\$28,543,954,573	\$32,043,074,605	-10.92%	\$231,663,163,328	\$246,165,108,270	-5.89%	(\$203,119,208,755)
1	2	Chicago O'Hare International Airport	\$242,618,059,858	\$216,990,223,059	11.81%	\$53,382,611,910	\$50,446,217,335	5.82%	\$189,235,447,948	\$166,544,005,724	13.62%	(\$135,852,836,038)
2	3	John F. Kennedy International Airport	\$217,054,497,047	\$187,285,290,896	15.90%	\$79,273,777,987	\$85,667,022,854	-7.46%	\$137,780,719,060	\$101,618,268,042	35.59%	(\$58,506,941,073)
-2	4	Port Laredo	\$205,875,226,937	\$231,582,702,046	-11.10%	\$80,006,632,411	\$95,085,757,310	-15.86%	\$125,868,594,526	\$136,496,944,736	-7.79%	(\$45,861,962,115)
-1	5	Port of Newark	\$185,465,190,406	\$195,565,433,952	-5.16%	\$15,261,651,024	\$17,131,361,403	-10.91%	\$170,203,539,382	\$178,434,072,549	-4.61%	(\$154,941,888,358)
1	6	Detroit Ambassador Bridge	\$129,580,757,073	\$148,135,337,607	-12.53%	\$67,193,453,043	\$78,229,790,425	-14.11%	\$62,387,304,030	\$69,905,547,182	-10.75%	\$4,806,149,013
-1	7	Port of Houston	\$126,549,019,470	\$158,267,269,427	-20.04%	\$74,035,305,167	\$93,876,217,846	-21.14%	\$52,513,714,303	\$64,391,051,581	-18.45%	\$21,521,590,864
0	8	Port of New Orleans	\$121,910,301,692	\$132,199,172,387	-7.78%	\$65,464,583,617	\$67,801,124,262	-3.45%	\$56,445,718,075	\$64,398,048,125	-12.35%	\$9,018,865,542
0	9	Los Angeles International Airport	\$118,111,998,893	\$118,376,073,567	-0.22%	\$48,851,385,004	\$55,170,720,107	-11.45%	\$69,260,613,889	\$63,205,353,460	9.58%	(\$20,409,228,885)
0	10	Port of Savannah	\$104,666,626,555	\$108,136,524,050	-3.21%	\$27,943,965,856	\$29,891,686,066	-6.52%	\$76,722,660,699	\$78,244,837,984	-1.95%	(\$48,778,694,843)
1	11	Port of Long Beach	\$91,793,730,723	\$92,980,424,201	-1.28%	\$28,991,938,680	\$31,172,526,183	-7.00%	\$62,801,792,043	\$61,807,998,018	1.61%	(\$33,809,853,363)
-1	12	Port Huron Blue Water Bridge, Mich.	\$85,429,416,817	\$99,755,753,062	-14.36%	\$38,856,789,835	\$46,277,783,638	-16.04%	\$46,572,626,982	\$53,477,969,424	-12.91%	(\$7,715,837,147)
0	13	Port of Charleston	\$78,347,997,882	\$90,657,607,402	-13.58%	\$30,173,454,001	\$40,103,371,984	-24.76%	\$48,174,543,881	\$50,554,235,418	-4.71%	(\$18,001,089,880)
3	14	Cleveland's Hopkins International Airport	\$70,817,464,044	\$66,528,890,958	6.45%	\$39,977,136,076	\$40,984,510,569	-2.46%	\$30,840,327,968	\$25,544,380,389	20.73%	\$9,136,808,108
-1	15	Buffalo Peace Bridge	\$70,396,165,454	\$79,583,934,990	-11.54%	\$36,712,152,082	\$41,003,851,959	-10.47%	\$33,684,013,372	\$38,580,083,031	-12.69%	\$3,028,138,710
0	16	Port of Virginia	\$68,998,139,421	\$74,979,895,303	-7.98%	\$24,468,479,928	\$24,888,676,204	-1.69%	\$44,529,659,493	\$50,091,219,099	-11.10%	(\$20,061,179,565)
0	17	Low-Value Shipments	\$66,904,051,103	\$74,560,229,719	-10.27%	\$49,426,622,388	\$55,733,680,688	-11.32%	\$17,477,428,715	\$18,826,549,031	-7.17%	\$31,949,193,673
6	18	Anchorage International Airport	\$60,118,315,283	\$57,236,623,178	5.03%	\$19,391,742,366	\$20,681,937,064	-6.24%	\$40,726,572,917	\$36,554,686,114	11.41%	(\$21,334,830,551)
0	19	San Francisco International Airport	\$59,044,532,844	\$61,802,931,059	-4.46%	\$32,413,041,986	\$29,783,441,362	8.83%	\$26,631,490,858	\$32,019,489,697	-16.83%	\$5,781,551,128
0	20	Hartsfield-Jackson Atlanta International Airport	\$54,555,509,426	\$60,653,730,370	-10.05%	\$15,490,247,726	\$21,943,010,855	-29.41%	\$39,065,261,700	\$38,710,719,515	0.92%	(\$23,575,013,974)
1	21	Miami International Airport	\$53,440,406,868	\$58,834,462,453	-9.17%	\$31,348,025,903	\$35,953,012,328	-12.81%	\$22,092,380,965	\$22,881,450,125	-3.45%	\$9,255,644,938
4	22	Port of Oakland	\$50,813,130,143	\$51,188,944,335	-0.73%	\$20,681,742,832	\$20,296,457,537	1.90%	\$30,131,387,311	\$30,892,486,798	-2.46%	(\$9,449,644,479)
-2	23	Dallas-Fort Worth International Airport	\$50,057,849,678	\$59,192,879,387	-15.43%	\$22,211,976,970	\$24,300,711,762	-8.60%	\$27,845,872,708	\$34,892,167,625	-20.19%	(\$5,633,895,738)
-1	24	Port of Baltimore	\$49,627,181,780	\$58,534,396,419	-15.22%	\$12,680,931,454	\$14,973,095,100	-15.31%	\$36,946,250,326	\$43,561,301,319	-15.19%	(\$24,265,318,872)
1	25	Otay Mesa Freeway Border Crossing, Calif.	\$46,002,459,223	\$49,119,096,689	-6.35%	\$15,056,544,441	\$16,890,455,539	-10.86%	\$30,945,914,782	\$32,228,641,150	-3.98%	(\$15,889,370,341)
N/A	26	Ysleta, Texas	\$42,641,877,751	\$0	NA	\$13,799,650,675	\$0	N/A	\$28,842,227,076	\$0	N/A	(\$15,042,576,401)
0	27	Port of Tacoma, Wash.	\$40,978,204,567	\$48,759,842,894	-15.96%	\$7,144,347,561	\$7,949,575,590	-10.13%	\$33,833,857,006	\$40,810,267,304	-17.09%	(\$26,689,509,445)
0	28	Port of New York	\$38,692,916,850	\$42,751,389,292	-9.49%	\$29,618,477,386	\$32,107,451,664	-7.75%	\$9,074,439,464	\$10,643,937,628	-14.75%	\$20,544,037,922
1	29	Port of Corpus Christi, Texas	\$36,535,659,013	\$34,534,818,985	5.79%	\$32,576,292,772	\$28,771,953,279	13.22%	\$3,959,366,241	\$5,762,865,706	-31.30%	\$28,616,926,531
-1	30	Pharr International Bridge, Texas	\$33,051,301,745	\$36,684,283,604	-9.90%	\$11,478,762,335	\$13,095,762,998	-12.35%	\$21,572,539,410	\$23,588,520,606	-8.55%	(\$10,093,777,075)
-16	31	El Paso Border Crossing	\$29,980,326,994	\$79,119,784,933	-62.11%	\$15,190,524,591	\$31,801,723,667	-52.23%	\$14,789,802,403	\$47,318,061,266	-68.74%	\$400,722,188
1	32	Eagle Pass, Texas	\$28,131,729,177	\$29,675,398,205	-5.20%	\$7,570,882,949	\$7,455,152,387	1.55%	\$20,560,846,228	\$22,220,245,818	-7.47%	(\$12,989,963,279)
-2	33	Port of Philadelphia	\$27,430,886,814	\$30,609,274,510	-10.38%	\$4,051,334,017	\$4,928,095,638	-17.79%	\$23,379,552,797	\$25,681,178,872	-8.96%	(\$19,328,218,780)
0	34	Port of Seattle	\$25,728,627,843	\$27,280,134,643	-5.69%	\$8,306,290,922	\$8,448,092,739	-1.68%	\$17,422,336,921	\$18,832,041,904	-7.49%	(\$9,116,045,999)
1	35	Rouses Point / Lacolle Border Crossing, N.Y.	\$24,240,773,067	\$26,761,192,581	-9.42%	\$9,026,775,594	\$10,844,697,449	-16.76%	\$15,213,997,473	\$15,916,495,132	-4.41%	(\$6,187,221,879)
-4	36	Santa Teresa Border Crossing, N.M.	\$24,001,435,295	\$30,504,770,356	-21.32%	\$9,917,815,982	\$14,098,528,777	-29.65%	\$14,083,619,313	\$16,406,241,579	-14.16%	(\$4,165,803,331)
3	37	Blaine / Surrey Border Crossing, Wash.	\$23,529,846,353	\$25,694,000,513	-8.42%	\$12,265,991,578	\$14,109,742,927	-13.07%	\$11,263,854,775	\$11,584,257,586	-2.77%	\$1,002,136,803
1	38	Pembina Border Crossing, N.D.	\$23,270,855,185	\$25,767,588,966	-9.69%	\$12,177,059,688	\$12,774,306,705	-4.68%	\$11,093,795,497	\$12,993,282,261	-14.62%	\$1,083,264,191
-2	39	PortMiami	\$22,543,418,696	\$26,600,657,085	-15.25%	\$7,942,420,133	\$10,006,995,769	-20.63%	\$14,600,998,563	\$16,593,661,316	-12.01%	(\$6,658,578,430)
-2	40	Nogales Border Crossing, Ariz.	\$22,413,360,403	\$26,203,552,065	-14.46%	\$8,478,563,440	\$10,485,668,891	-19.14%	\$13,934,796,963	\$15,717,883,174	-11.34%	(\$5,456,233,523)
-6	41	Port of Jacksonville	\$21,830,581,775	\$27,151,772,451	-19.60%	\$5,153,969,995	\$6,588,273,013	-21.77%	\$16,676,611,780	\$20,563,499,438	-18.90%	(\$11,522,641,785)
1	42	Port of Brunswick, Ga.	\$18,979,922,599	\$19,100,820,776	-0.63%	\$7,237,553,761	\$5,661,888,587	27.83%	\$11,742,368,838	\$13,438,932,189	-12.62%	(\$4,504,815,077)
-1	43	Port Everglades, Fla.	\$18,789,628,243	\$22,717,110,369	-17.29%	\$9,659,268,693	\$12,215,784,952	-20.93%	\$9,130,359,550	\$10,501,325,417	-13.06%	\$528,909,143
-1	44	Brownsville International Bridges, Texas	\$17,378,770,967	\$18,881,977,093	-7.96%	\$8,483,748,089	\$9,231,110,015	-8.10%	\$8,895,022,878	\$9,650,867,078	-7.83%	(\$411,274,789)
3	45	Port of Alexandria Bay, N.Y.	\$16,321,744,938	\$16,143,589,474	1.10%	\$6,731,591,329	\$6,926,112,475	-2.81%	\$9,590,153,609	\$9,217,476,999	4.04%	(\$2,858,562,280)
-6	46	Seattle-Tacoma International Airport	\$16,132,255,120	\$23,857,400,007	-32.38%	\$9,364,803,906	\$14,406,704,987	-35.00%	\$6,767,451,214	\$9,450,695,020	-28.39%	\$2,597,352,692
-2	47	Calexico/Mexicali (East) Border Crossing, Calif.	\$15,791,318,893	\$17,782,781,863	-11.20%	\$5,531,339,370	\$6,625,643,791	-16.52%	\$10,259,979,523	\$11,157,138,072	-8.04%	(\$4,728,640,153)
-2	48	Port of Mobile, Ala.	\$15,232,203,514	\$17,708,096,086	-13.98%	\$3,716,333,482	\$4,147,376,304	-10.39%	\$11,515,870,032	\$13,560,719,782	-15.08%	(\$7,799,536,550)
-2	49	Port of Southern Louisiana, Gramercy, St. James Parish	\$15,160,473,980	\$17,087,395,964	-11.28%	\$12,530,920,553	\$13,564,063,863	-7.62%	\$2,629,553,427	\$3,523,332,101	-25.37%	\$9,901,367,126
2	50	Portal-North Portal Border Crossing, N.D.	\$14,828,328,020	\$17,627,820,088	-15.88%	\$9,139,006,885	\$11,260,611,331	-18.84%	\$5,689,321,135	\$6,367,208,757	-10.65%	\$3,449,685,750

Source: WorldCity analysis of U.S. Census Bureau data

# Top 50 Export Commodities

1-YEAR CHANGE	2020 RANK		2020	2019	ONE-YEAR CHANGE
		<b>Total, All Exports</b>	<b>\$1,431,406,391,928</b>	<b>\$1,645,174,334,756</b>	<b>-12.99%</b>
0	1	Civilian aircraft, parts	\$71,580,197,066	\$125,489,864,306	-42.96%
0	2	Gasoline, other fuels	\$60,709,450,364	\$87,507,950,669	-30.62%
0	3	Oil	\$50,285,962,130	\$65,323,191,031	-23.02%
0	4	Passenger vehicles	\$45,642,595,742	\$56,163,760,851	-18.73%
1	5	Computer chips	\$44,212,664,301	\$40,099,507,189	10.26%
1	6	Low-value exports	\$34,453,064,297	\$37,849,765,333	-8.97%
2	7	LNG, other petroleum gases	\$33,344,747,248	\$30,524,255,104	9.24%
-3	8	Motor vehicle parts	\$33,166,077,036	\$43,018,677,135	-22.90%
-1	9	Cell phones, related equipment	\$28,091,199,912	\$30,694,475,509	-8.48%
0	10	Medical instruments	\$28,022,804,758	\$29,730,848,546	-5.75%
0	11	Vaccines, plasma, other blood "fractions"	\$26,090,950,690	\$25,863,963,793	0.88%
2	12	Soybeans	\$25,851,456,350	\$18,724,338,932	38.06%
-1	13	Computers	\$24,776,332,536	\$25,787,213,865	-3.92%
-1	14	Medicines in individual dosages	\$23,081,429,898	\$22,860,432,095	0.97%
1	15	Gold	\$20,561,622,698	\$17,173,208,199	19.73%
3	16	Machinery, parts for semiconductor manufacturing	\$19,614,947,232	\$15,459,666,265	26.88%
0	17	Commercial vehicles	\$14,007,617,748	\$17,078,975,377	-17.98%
0	18	Computer parts	\$12,893,763,521	\$16,683,566,537	-22.72%
2	19	Plastics	\$10,859,249,848	\$10,965,552,016	-0.97%
0	20	Taps, cocks and valves for pipes, tanks	\$10,561,409,163	\$12,112,170,814	-12.80%
-6	21	Diamonds, not mounted	\$10,388,779,338	\$17,735,482,861	-41.42%
45	22	Unwrought platinum in various forms	\$9,834,087,064	\$4,725,699,614	108.10%
1	23	Catalytic converters, air filters, oil filters, etc.	\$9,799,017,053	\$10,437,577,513	-6.12%
10	24	Corn	\$9,575,253,817	\$8,013,010,213	19.50%
4	25	Medical equipment for physicals	\$9,271,485,249	\$9,306,634,587	-0.38%
-4	26	Orthopedic appliances, artificial body parts	\$9,209,337,984	\$10,740,375,060	-14.25%
9	27	Misc. medical chemical re-agents	\$9,203,143,788	\$7,574,044,627	21.51%
-5	28	Electrical supplies, apparatus, less than 1000V	\$9,111,525,517	\$10,449,685,464	-12.81%
-1	29	Aircraft engines, engine parts	\$8,506,809,959	\$9,380,960,146	-9.32%
-5	30	Insulated wire, cable	\$8,297,105,148	\$10,072,061,087	-17.62%
27	31	Scrap of precious metal	\$7,886,167,772	\$5,239,460,669	50.51%
-1	32	Almonds, walnuts, pistachios, hazelnuts, etc.	\$7,845,288,023	\$8,481,413,428	-7.50%
-1	33	Pumps for dispensing liquids	\$7,280,392,705	\$8,312,741,192	-12.42%
3	34	Miscellaneous machines, parts	\$6,699,750,722	\$7,470,997,724	-10.32%
4	35	Misc. plastic articles	\$6,552,160,119	\$6,913,056,213	-5.22%
8	36	Wheat	\$6,318,111,098	\$6,265,916,263	0.83%
29	37	Computer storage devices	\$6,255,185,617	\$4,851,420,044	28.94%
-3	38	Diesel engines	\$6,236,137,516	\$7,944,941,415	-21.51%
6	39	Prepared foods, beverages	\$6,211,975,344	\$6,262,750,457	-0.81%
1	40	Photo-sensitive semiconductors, parts	\$6,158,815,611	\$6,688,830,294	-7.92%
-8	41	Value added to a returned import	\$6,137,176,324	\$8,154,416,576	-24.74%
-16	42	Coal, briquettes	\$6,092,861,428	\$9,818,834,465	-37.95%
16	43	Pork	\$5,985,995,708	\$5,217,599,579	14.73%
3	44	Cotton	\$5,969,433,461	\$6,147,101,904	-2.89%
-18	45	Paintings, drawings and other artwork	\$5,921,126,606	\$9,483,139,473	-37.56%
-4	46	Misc. aircraft, helicopter parts	\$5,897,822,944	\$6,531,559,182	-9.70%
-7	47	Motor vehicle engines	\$5,750,707,256	\$6,885,079,336	-16.48%
-5	48	Compressors and pumps	\$5,746,264,086	\$6,497,630,503	-11.56%
3	49	Power supplies, transformers	\$5,613,491,068	\$5,953,408,952	-5.71%
-4	50	Transmission shafts, bearings, gears	\$5,544,667,711	\$6,228,036,762	-10.97%

Source: WorldCity analysis of U.S. Census Bureau data

# Top 50 Import Commodities

1-YEAR CHANGE	2020 RANK		2020	2019	ONE-YEAR CHANGE
		<b>Total, All Imports</b>	<b>\$2,335,698,315,733</b>	<b>\$2,498,402,215,176</b>	<b>-6.51%</b>
0	1	Passenger vehicles	\$143,589,265,058	\$176,853,199,986	-18.81%
2	2	Computers	\$103,654,182,828	\$90,157,272,211	14.97%
0	3	Cell phones, related equipment	\$93,538,893,597	\$100,266,392,420	-6.71%
2	4	Medicines in individual dosages	\$81,373,483,234	\$78,418,475,390	3.77%
0	5	Exports returned, no change	\$77,840,823,287	\$86,403,030,928	-9.91%
-4	6	Oil	\$76,494,544,190	\$126,894,686,866	-39.72%
0	7	Motor vehicle parts	\$58,562,067,806	\$68,014,538,258	-13.90%
1	8	Vaccines, plasma, other blood "fractions"	\$51,259,483,870	\$42,813,501,594	19.73%
-1	9	Gasoline, other fuels	\$34,479,511,556	\$59,745,017,373	-42.29%
38	10	Gold	\$33,801,546,896	\$9,681,074,925	249.15%
-1	11	Computer chips	\$31,778,775,047	\$32,964,963,514	-3.60%
1	12	Medical instruments	\$26,911,906,780	\$27,639,821,610	-2.63%
215	13	Articles with gold, other precious metals	\$26,316,175,559	\$1,610,838,110	1533.69%
-3	14	Commercial vehicles	\$25,863,657,344	\$32,912,291,334	-21.42%
0	15	Furniture, parts	\$23,545,398,295	\$23,395,802,267	0.64%
4	16	Computer parts	\$23,378,876,682	\$19,129,648,261	22.21%
-3	17	TVs, computer monitors	\$21,897,359,943	\$23,564,738,325	-7.08%
-2	18	Seats, excluding barber, dental	\$21,246,496,289	\$22,988,530,982	-7.58%
-7	19	Aircraft engines, engine parts	\$19,590,205,934	\$30,473,155,982	-35.71%
75	20	PPE, other articles made from textile materials	\$19,541,574,608	\$5,156,860,454	278.94%
-4	21	Insulated wire, cable	\$19,084,853,875	\$21,312,618,119	-10.45%
-1	22	Low-value imports	\$17,477,428,715	\$18,826,549,031	-7.17%
2	23	Power supplies, transformers	\$15,751,333,808	\$14,772,493,495	6.63%
10	24	Digital storage devices	\$14,983,362,505	\$11,521,527,035	30.05%
-7	25	Aircraft, helicopter parts	\$13,899,869,552	\$20,226,322,314	-31.28%
2	26	Satellites, other aircraft	\$13,811,273,266	\$14,184,141,888	-2.63%
-1	27	Toys, children's bicycles, games	\$13,600,908,289	\$14,646,892,105	-7.14%
8	28	Misc. plastic articles	\$13,485,651,772	\$11,136,594,309	21.09%
-2	29	Rubber tires	\$13,183,224,209	\$14,624,282,064	-9.85%
-7	30	Taps, cocks and valves for pipes, tanks	\$12,859,181,272	\$15,207,163,180	-15.44%
7	31	Photo-sensitive semiconductors, parts	\$12,838,959,996	\$11,011,918,837	16.59%
0	32	Heterocyclic chemical compounds	\$12,722,343,970	\$12,851,629,773	-1.01%
-11	33	Printers, all types, parts	\$12,507,220,031	\$15,471,548,455	-19.16%
-3	34	Electrical boards, panels and switches	\$12,266,872,367	\$13,131,277,015	-6.58%
-16	35	Diamonds, not mounted	\$12,084,946,362	\$19,824,933,246	-39.04%
-7	36	Orthopedic appliances, artificial body parts	\$11,859,858,178	\$13,708,755,628	-13.49%
33	37	Unwrought platinum in various forms	\$11,287,411,503	\$6,810,199,483	65.74%
-14	38	Sweaters, pullovers, vests	\$11,195,259,282	\$15,031,572,562	-25.52%
-6	39	Compressors and pumps	\$10,896,869,747	\$11,706,588,638	-6.92%
1	40	Cameras, including TV	\$10,769,979,785	\$10,929,802,585	-1.46%
14	41	Refrigerators, freezers	\$10,172,877,441	\$9,082,570,227	12.00%
9	42	Catalytic converters, air filters, oil filters, etc.	\$10,154,669,224	\$9,362,163,174	8.46%
-8	43	Motor vehicle engines	\$9,981,305,347	\$11,191,648,441	-10.81%
-5	44	Electrical supplies, apparatus, less than 1000V	\$9,893,827,483	\$10,963,750,294	-9.76%
-15	45	Tractors	\$9,808,871,175	\$13,338,690,503	-26.46%
25	46	Nucleic acids and salts, heterocyclic compounds	\$9,631,524,168	\$6,667,033,673	44.46%
5	47	Electric water, space, soil heaters	\$9,579,510,525	\$9,235,640,735	3.72%
-11	48	Pumps for dispensing liquids	\$9,558,461,896	\$11,097,951,336	-13.87%
-6	49	Lamp and lighting parts	\$9,480,176,797	\$10,264,096,485	-7.64%
14	50	Electric storage batteries	\$9,274,111,645	\$7,941,927,934	16.77%

Source: WorldCity analysis of U.S. Census Bureau data



We may  
be local.

But we can help  
take your business  
global.

We're your neighborhood bank who  
can introduce your business to a  
world of opportunities.

Letters of Credit

Documentary Collections

Bankers Acceptances

Export Financing

Standby Letters of Credit

Member FDIC, TD Bank, N.A. | Equal Housing Lender 

Where do you want  
to go? Give us a call.

1-800-937-8226 or visit us  
at [tdbank.com/globaltrade](https://tdbank.com/globaltrade)



America's Most Convenient Bank®